

## Wall Mounted Touch Panel

Model No.: T20, T20-1, T20-2, T20-3

1-4 Zone dimming switch/Glass touch panel/Wireless remote 30m distance/AAA x 2 battery



T20-1  
1 Zone switch



T20-2  
2 Zone switch



T20-3  
3 Zone switch



T20  
4 Zone switch

### Features

- Touch panel 1/2/3/4 zone dimming switch RF remote.
- Each zone can remote control multiple Skydance's 2.4G LED controllers.
- Ultra sensitive high strength glass touch panel.
- Touch keys with chord tones and LED indicator.
- Free installation, no wiring, removable.
- AAA x 2 battery powered.
- White & Black glass panel available.

CE RoHS  LVD RED

### Technical Parameters

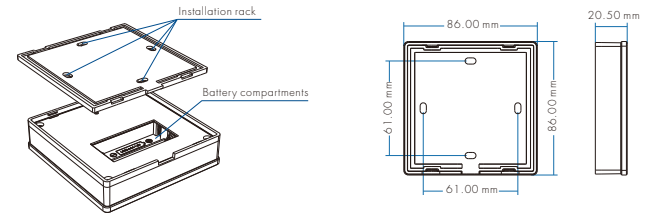
Input and Output	
Output signal	RF(2.4GHz)
Working voltage	3VDC(AAA x 2)
Working current	< 5mA
Standby current	< 20μA
Standby time	1 year
Remote distance	30m
Safety and EMC	
EMC standard (EMC)	EN301 489, EN 62479
Safety standard(IVD)	EN60950
Radio Equipment(RED)	EN300 328
Certification	CE, EMC, IVD, RED

Environment	
Operation temperature	Ta: -30°C ~ +55°C
Case temperature (Max.)	Tc: +65°C
IP rating	IP20

Warranty	
Warranty	5 years

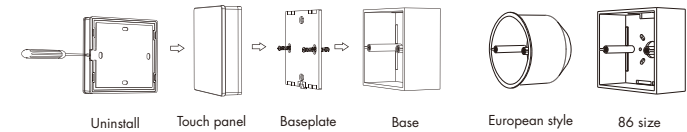
Weight	
Net weight	0.160kg
Gross weight	0.190kg

### Mechanical Structures and Installations



Installation diagram:

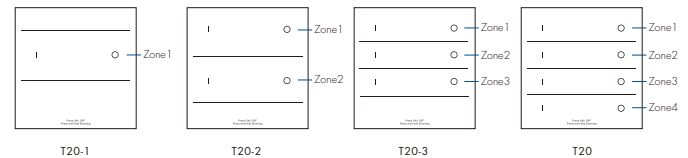
Typical base as below:



To fix the panel, two options are offered for selection:

- Option 1: fix it on the wall with two screws.  
Option 2: adhere it to the wall with pastar.

### Key function



I — ON key

Short press: Turn on the light of each zone.  
Long press(1-6s): Dimming up when light is on.

O — OFF key

Short press: Turn off the light of each zone.  
Long press(1-6s): Dimming down when light is on.  
Long press(5s): Turn on or turn off tone when light is off.

## Touch Panel work as RF remote (two match ways)

End user can choose the suitable match/delete ways. Two options are offered for selection:

### Use the controller's Match key

Match:

Short press match key, immediately press ON key of the touch panel.

The LED indicator fast flash a few times means match is successful.

Delete:

Press and hold match key for 5s to delete all match.

The LED indicator fast flash a few times means all matched remotes were deleted.

### Use Power Restart

Match:

Switch off the power of the receiver, then switch on power again, immediately short press ON key 3 times on the touch panel.

The light blinks 3 times means match is successful.

Delete:

Switch off the power of the receiver, then switch on power again, immediately short press ON key 5 times on the touch panel.

The light blinks 5 times means all matched remotes were deleted.

## Safety information

1. Read all instructions carefully before you begin this installation.
2. When installing battery, pay attention to the battery positive and negative polarity.
  - A long time without the remote control, remove the battery.
  - When remote distance becomes smaller and insensitive, replace the battery.
3. If no response from the receiver, please re-match the remote.
4. Gently handle remote, beware of falling.
5. For indoor and dry location use only.