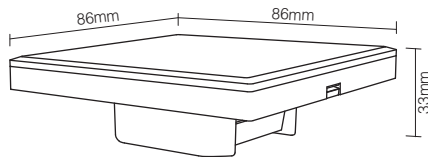


DALI Dimming Panel
Model No.: DP1 / DP2

1. Features

Use DALI standard protocol IEC62386. DALI bus give power; easily setting address. Support single address mode, group address mode and broadcast mode; control the lamp ON/OFF and brightness.

2. Parameters



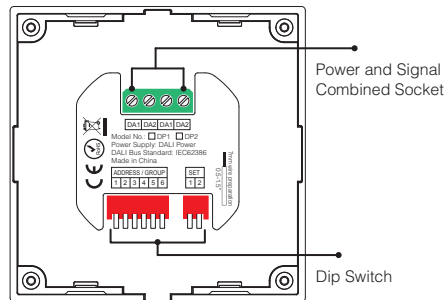
DALI brightness dimming panel

Model No.: DP1
Power Supply: DALI Power
DALI Bus Standard: IEC62386
Standby Current: 5mA
Working Temperature: -20~60°C
Product Weight: 138g

DALI color temperature dimming panel

Model No.: DP2
Power Supply: DALI Power
DALI Bus Standard: IEC62386
Standby Current: 5mA
Working Temperature: -20~60°C
Product Weight: 138g

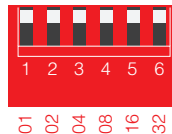
3. Connection Diagram



4. Dip Switch Operation

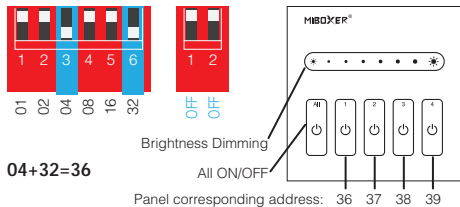
Via dip switch, you can set 64 single address(0~63), 16 group address (0~15) and broadcast mode. Address value= the sum of the DIP Switch value(to get the place value when in "ON" position, otherwise it will be 0).

Address / Group corresponding value diagram

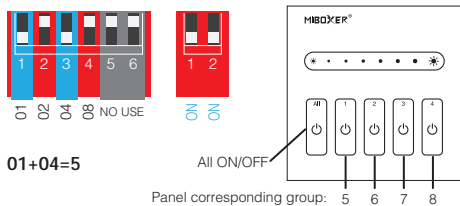


DALI brightness dimming panel setting diagram.

i.e: Under single address mode, set the initial address to 36



i.e: Under group address mode, set the initial address to 5



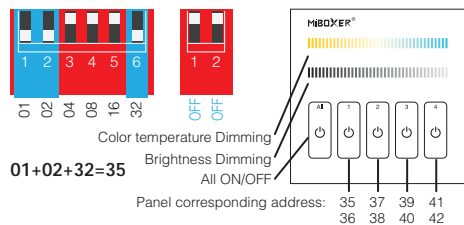
i.e: Set broadcast mode



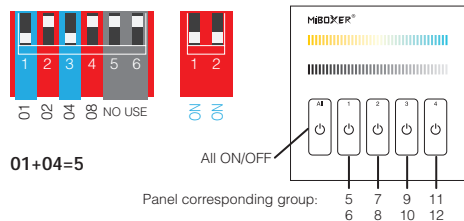
Note: it will be broadcast mode to press 1 or 2.

DALI color temperature dimming panel setting diagram

i.e: Under single address mode, set the initial address to 35

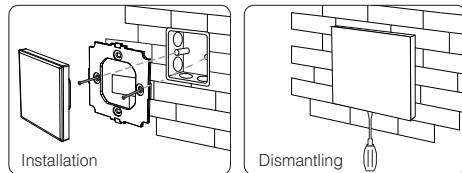


i.e: Under group address mode, set the initial address to 5



Note: There is no broadcast mode with DALI color temperature dimming panel.

5. Installation / Dismantling



6. Attention

When installation, pls handle with care to avoid the broken of the glass panel.



Made in China