

## Wall Mounted Touch Panel

Model No.: T21-1, T22-1, T24-1

4 Zone/1-4 color/Glass touch panel/Color wheel/Wireless remote 30m distance/AAA x 2 battery



T21-1  
4 Zone dimming



T22-1  
4 Zone CCT



T24-1  
4 Zone RGB/RGBW

### Features

- Touch panel 4 zone 1-4 color RF remote.
- Each zone can remote control multiple Skydance's 2.4G LED controllers.
- Ultra sensitive high strength glass touch panel with touch color wheel in the middle.
- Smooth and accurate color adjustment by touching the color slide.
- Touch keys with chord tones and LED indicator.
- Free installation, no wiring, removable.
- AAA x 2 battery powered.
- White & Black glass panel available.

CE RoHS  LVD RED

### Technical Parameters

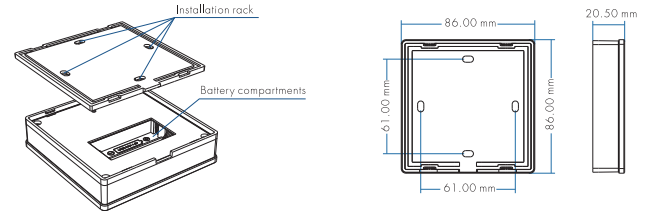
Input and Output	
Output signal	RF(2.4GHz)
Working voltage	3VDC(AAA x 2)
Working current	< 5mA(Without tune) < 20mA(with tune)
Standby current	< 20µA
Standby time	1 year
Remote distance	30m (Barrierfree space)

Warranty	
Warranty	5 years

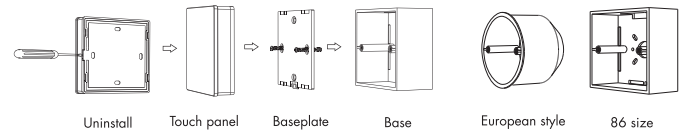
Safety and EMC	
EMC standard (EMC)	ETSI EN 301 489-1 V2.2.3 ETSI EN 301 489-17 V3.2.4
Safety standard(LVD)	EN 62368-1:2020+A11:2020
Radio Equipment(RED)	ETSI EN 300 328 V2.2.2
Certification	CE,EMC,LVD,RED

Environment	
Operation temperature	Ta:-30°C ~ +55°C
Case temperature (Max.)	Tc:+65°C
IP rating	IP20

### Mechanical Structures and Installations



#### Installation diagram:



#### Typical base as below:

To fix the panel, two options are offered for selection:

- Option 1: fix it on the wall with two screws.  
Option 2: adhere it to the wall with paster.

### Match Remote Control (two match ways)

End user can choose the suitable match/delete ways. Two options are offered for selection:

#### Use the controller's Match key

**Match:**  
Short press match key, immediately press zone key of the touch panel.  
The LED indicator fast flash a few times means match is successful.

**Delete:**  
Press and hold match key for 5s to delete all match.  
The LED indicator fast flash a few times means all matched remotes were deleted.

#### Use Power Restart

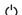


**Match:**  
Switch off the power of the receiver, then switch on power, repeat again.  
Immediately short press zone key 3 times on the touch panel.  
The light blinks 3 times means match is successful.

**Delete:**  
Switch off the power of the receiver, then switch on power, repeat again.  
Immediately short press zone key 5 times on the touch panel.  
The light blinks 5 times means all matched remotes were deleted.

## Key function

## T21-1 Single color panel

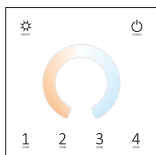


-  Turn on/off all zone light.
-  Brightness, 10 levels.
-  Brightness wheel.

**1 2 3 4**

Short press turn on zone light and select zone simultaneously, long press 2s turn off zone light.  
4 zone control separately or synchronously, each zone could control multiple receivers.

## T22-1 Dual color panel







-  Turn on/off all zone light.
-  Brightness, 10 levels.
-  Color temperature wheel.

**1 2 3 4**

Short press turn on zone light and select zone simultaneously, long press 2s turn off zone light.  
4 zone control separately or synchronously, each zone could control multiple receivers.

## T24-1 RGBW panel



-  Turn on/off all zone light.
-  Color wheel.
-  Short press play 10 builtin mode, long press 2s run mode-cycle.
-  Adjust dynamic mode speed or static color brightness, 10 levels.

**R G B W**

Short press get red, green, blue, white color,  
long press adjust each color brightness.

**1 2 3 4**

Short press turn on zone light and select zone simultaneously, long press 2s turn off zone light.  
4 zone control separately or synchronously, each zone could control multiple receivers.

## Safety information

1. Read all instructions carefully before you begin this installation.
2. When installing battery, pay attention to the battery positive and negative polarity.  
A long time without the remote control, remove the battery.  
When remote distance becomes smaller and insensitive, replace the battery.
3. If no response from the receiver, please re-match the remote.
4. Gently handle remote, beware of falling.
5. For indoor and dry location use only.

**Note:** After touch power key to turn off light, long press power key for 5 seconds will turn on or turn off tone.