

Din Rail 2 in 1 LED controller (WiFi + 2.4G)

Model No.:TW2

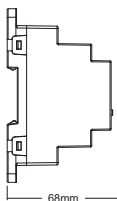
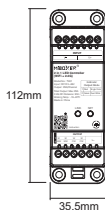
Features

- WiFi + 2.4Ghz wireless transmitting
- Compatible with standard 35mm universal rail
- Brightness adjustable
- Auto-forwarding: Automatically forward the remote control signal to another controller, making the remote control distance infinite
- Have DND function, usually used in power failure area and save power
- Support TUYA SMART app control
- Support third party voice control like Alexa, Google assistant, Yandex Alice, Tmall Genie, Baidu and Xiaomi



Parameters

Name: Din Rail 2 in 1 LED controller	IP Rating:	IP20
Model No.: TW2	Working Temperature:	-10~40 C
Input Voltage: DC12~48V	EMC Standard (EMC):	ETSI EN 301 489-1 V2.3(2019-11) ETSI EN 301 489-3 V2.3.2 (2023-01)
Output Current: 20A/ Single channel	Safety Standard (LVD):	EN 61347-1: 2015+A1: 2021 EN 61347-2-11: 2001+A1:2019
Total Output: Max 20A	Radio Equipment (RED):	ETSI EN 300 328 V2.2.2 (2019-07)
Protocol: WiFi + 2.4G	Certification:	CE, EMC, LVD, RED
Control Distance: RF: 30m		
WiFi Standard: IEEE 802.11b/g/n 2.4GHz		



DIN-Rail mounting size:
TS-35/7.5 or TS-35/15
(Purchasing separately)



Connection Diagram



Setting Output Mode

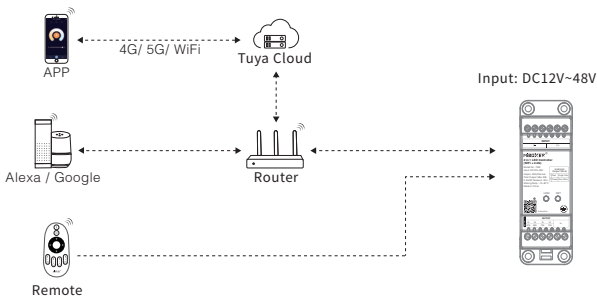
Output mode is related with connected led lights

Solution: short press " SET " to switch mode (attention: it will step out automatically without any operation within 3 seconds)



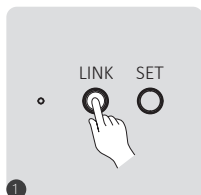
Indicator Output Mode		
1	Red	Single Color
2	Green	Dual White

Application Diagram

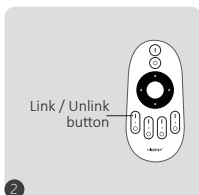


2.4G RF Remote control instruction

Linking Code Instructions



1 Short press "Link" button once



2 Short press " 1 " button 3 times within 3 seconds.

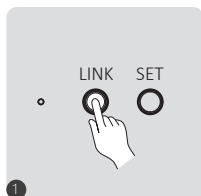


3 Lights blink 3 times slowly means linking is done successfully.



Linking failed if light is not blinking slowly, Please follow above steps again. (Note: Light that have linked can't link again)

Unlinking Code Instructions



1 Short press "Link" button once



2 Short press " 1 " button 5 times within 3 seconds.



3 Lights blink 10 times quickly means unlinking is done successfully.



Unlinking failed if light is not blinking quickly, Please follow above steps again. (Note: Light haven't linked that don't need to unlink)

Compatible with these 2.4G RF remote controls (Purchased separately)



C2



C3



FUT006



FUT007



B1 / B1-B / T1



B2 / T2



K1 / K1-B



K2 / K2-B



FUT087
FUT087-B



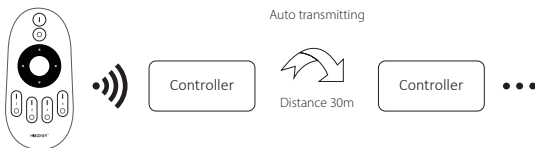
S1-B / S1-W
S1-G



WL-Box2

Transmitting function instruction

One Controller can transmit the signals from the remote control to another Controller within 30m, as long as there is a LED Driver within 30m, the remote control distance can be limitless.



Attention: All "LED Driver" must be linked with one remote.

Turn Do Not Disturb mode on and off (ON by default)

Turn on "Do Not Disturb" (applicable to areas with frequent power outages to save energy)

Turn on Do Not Disturb mode:

Short press the "OFF" button 3 times within 3 seconds, and then short press the "ON" button 3 times. The light flashes 4 times to indicate success.

Note: When the lamp is powered on again after a power outage, its status (lights on or off) will remain the same as before the power outage.

Turn off Do Not Disturb mode:

Short press the "ON" button 3 times within 3 seconds, and then short press the "OFF" button 3 times. The light flashes 4 times slowly to indicate successful shutdown.

Note: When the lamp is powered on again after a power outage, its status will be on by default.

Smartphone app control instruction

Network Configuration (Don't support 5G router)

1). Download and install [Tuya Smart] app

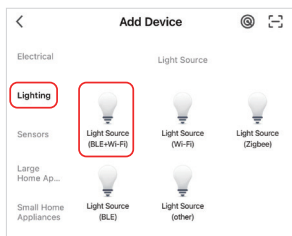
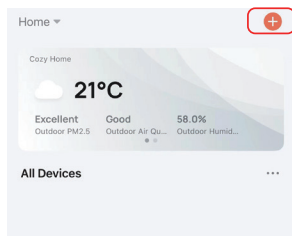
Search for [Tuya Smart] in Apple or Google store or scan following QR code to download and install the app.

Please open the app click " Register " button to create account while using it in the first time, Log in directly if you already had account.



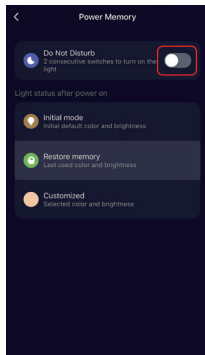
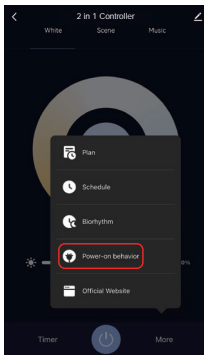
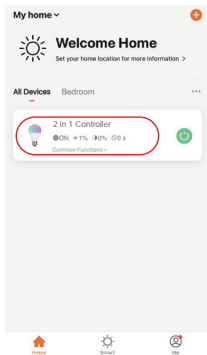
2). Network Configuration

- (1) Connect controller with power supply.
- (2) Confirm indicator light is flashing quickly (2 flashes per second),
If indicator light isn't in fast flashing state, there are two ways to enter:
 - Long press " LINK " key until indicator light flashing quickly.
 - Power off and on controller 6 times.
- (3) Connect phone with home WiFi network in the 2.4GHz frequency.
- (4) Open homepage of app and click " + " button at the upper right corner of page.
- (5) Click " Lighting " on the left side of page and then click " Light Source (BLE+Wi-Fi) "
- (6) Follow app prompts to complete configuration.



App turn on and off "Do Not Disturb" mode (default activated)

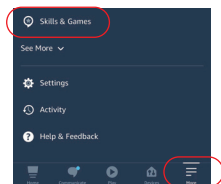
Click the light which need to be set up or group control --- click "More" --- click "Power-on behavior" --- turn on or off



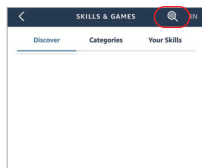
Alexa voice control instruction

Please add device into [Tuya Smart] app, then start following steps

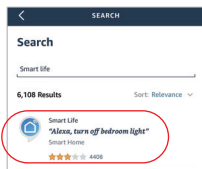
- 1). Open Alexa App
- 2). Click "More" on the bottom of right corner
- 3). Click "Skills & Games"



- 4). Click "Q" on the top of right corner
- 5). Type into "Smart life" and search



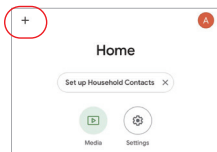
- 6). Click "Smart Life" skill, follow instruction to finish configuration and start voice control



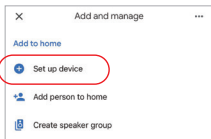
Google Home voice control instruction

Please add device into **[Tuya Smart]** app, then start following steps

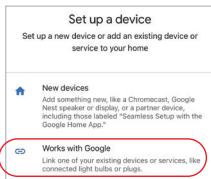
- 1). Open Google Home App
- 2). Click “+” on the top of left corner



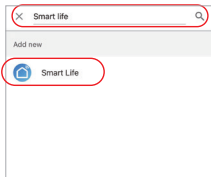
- 3). Click “Set up device”



- 4). Click “Works with Google”



- 5). Click “Q” on the top of right corner
- 6). Type into “Smart life” and search
- 7). Click “Smart Life” skill, follow instruction to finish configuration and start voice control



Notice

1. Please check whether the voltage of the power supply is in accordance with the light, and please check the connection of both the cathode and anode, otherwise the light will be broken.
2. Please don't connect wires with power on. Please turn on again only when it is in right connection and no short circuit.
3. Non-professional user cannot dismantle the lighting fixtures directly.
4. Please do not use the light in the place with widely range metal area or strong electromagnetic wave nearby, otherwise, the remote distance will be seriously affected.

Made in China



Dimmer can not
use in humid area