

Wall Mounted Rotary Panel

Model No.: T1-K, T2-K, T3-K

1-3 color/Glass panel/Rotary dimming/DC input/3 channel constant voltage PWM output/Wireless remote control



T1-K



T2-K



T3-K

CE RoHS  LVD

Features

- Rotary panel single color, dual color or RGB PWM constant voltage controller.
- Rotate knob to change RGB color, color temperature or brightness.
- 256 levels 0-100% dimming smoothly without any flash.
- Compatibility with RF 2.4G single zone or multiple zone remote control.
- Push/Rotate with chord tones and LED indicator.
- White & Black glass panel available.

Technical Parameters

Input and Output			
Model	T1-K	T2-K	T3-K
Input voltage	12-24VDC	12-24VDC	12-24VDC
Input current	12.5A	12.5A	12.5A
Output voltage	4 x [12-24]VDC	4 x [12-24]VDC	3 x [12-24]VDC
Output current	4CH,3A/CH	4CH,3A/CH	3CH,4A/CH
Output power	144-288W	144-288W	144-288W
Output type	Constant voltage	Constant voltage	Constant voltage
Light type	Single color	Dual color	RGB

Safety and EMC

EMC standard [EMC]	EN301 489,EN 62479
Safety standard[LVD]	EN60950
Radio Equipment[RED]	EN300 328
Certification	CE,EMC,LVD,RED

Environment

Operation temperature	Ta: -30°C ~ +55°C
Case temperature [Max.]	Tc: +85°C
IP rating	IP20

Warranty and Protection

Warranty	5 years
Protection	Reverse Polarity Over-heat

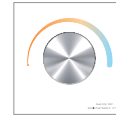
Knob function

T1-K Single color dimmer



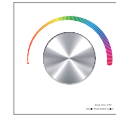
- **Push:** Turn on or off light.
After turn on light:
- **Rotate:** Rotate knob to adjust brightness [2.5 turns, 50 levels].
- **Long push[1-6s]:** Continuous 256 levels brightness adjustment.

T2-K Dual color temperature



- **Push:** Turn on or off light.
After turn on light:
- **Rotate:** Rotate knob to change color temperature or brightness [2.5 turns, 50 levels].
- **Push twice:** Switch between color temperature or brightness adjustment.
- **Long push[1-6s]:** Continuous 256 levels brightness adjustment.

T3-K RGB

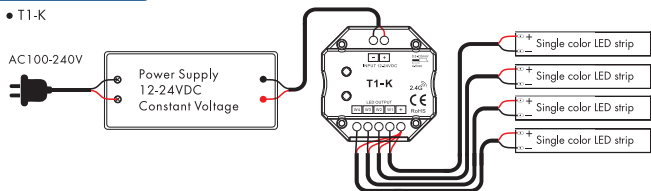


- **Push:** Turn on or off light.
After turn on light:
- **Rotate:** Rotate knob to change RGB color [3 turns, 60 colors] or brightness [2.5 turns, 50 levels].
- **Push twice:** Switch between RGB color or brightness adjustment.
- **Long push[1-6s]:** Continuous 256 levels brightness adjustment.

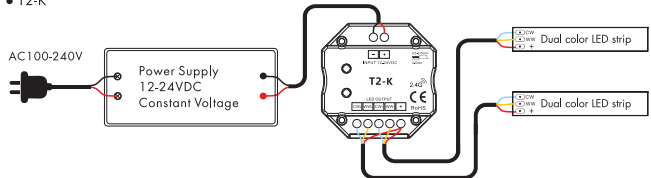
Note: After push knob to turn off light, long press push knob for 5 seconds will turn on or turn off tone.

Wiring diagram

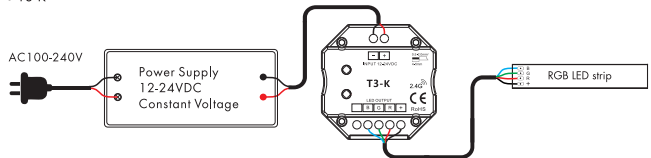
• T1-K



• T2-K



• T3-K



LED power supply voltage and power select :

- 12V lamp, Input 12V power supply, can load 0~144W,
- 24V lamp, Input 24V power supply, can load 0~288W, The power supply power must larger than load power 20%.

Match Remote Control (two match ways)

The rotary panel controller can also match with the RF remote (optional).
End user can choose the suitable match/delete ways. Two options are offered for selection:

Use Knob

Match:

Turn on light, turn off, immediately push the knob for 5s, then press on/off key (single zone remote) or zone key (multiple zone remote) of the RF remote within 5s. The LED indicator fast flash 3 times means match is successful.

Delete:

Turn on light, turn off, immediately push the knob for 10s, delete all matched RF remote.
The LED indicator fast flash 6 times means all matched remotes were deleted.

Use Power Restart

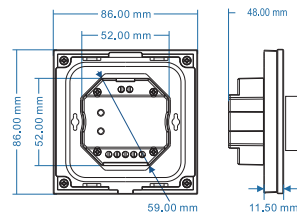
Match:

Switch off the power, then switch on power again, immediately short press on/off key (single zone remote) or zone key (multiple zone remote) 3 times on the remote. The light blinks 3 times means match is successful.

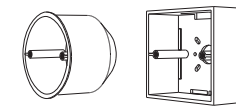
Delete:

Switch off the power, then switch on power again, immediately short press on/off key (single zone remote) or zone key (multiple zone remote) 5 times on the remote. The light blinks 5 times means all matched remotes were deleted.

Mechanical Structures and Installations



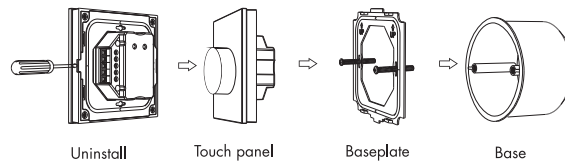
Typical base as below:



European style

86 size

Installation diagram:



Uninstall

Touch panel

Baseplate

Base