


Input your WiFi SSID and password.

← Add Device

1 2 3 4

Choose a WiFi



WiFi name Your wifi name

WiFi password Your wifi password

Remember password [Change WiFi](#)


NEXT

← Add Device

1 2 3 4

Name this device



 Such as your light

Named your device to complete.

COMPLETE

When the green light keeps on, the device is online. Start to control now!

V-TAC®

V-TAC SMART HOME

## WiFi ONLINE SWITCH USER GUIDE

Parameter:  
Model:VT-5008 SKU:8422  
Rated Voltage: 90V-250V AC  
Max. Current: 10A  
Wireless Standard: Wi-Fi 2.4Ghz  
Material: PC



Alexa/Google Home Tutorial



FAQ



Multi language Manual



Google Paly



IOS

1. Install V-TAC Smart Home App into smart phone or tablet device. Or scan the QR code, download and install into smart phone or tablet device.

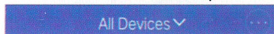
2. Power up  
ON/OFF operating principle  
The connected appliances work/stop through live wire power on/off



Pairing button

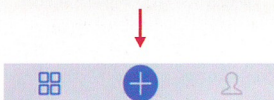
3. Cut off the power. Use screw driver to open the rear cover. Connect the wires correctly. Install and power it up.

4. Set up  
Press and hold up button for about 6 seconds until the Wi-Fi GREEN LED repaid flashes.

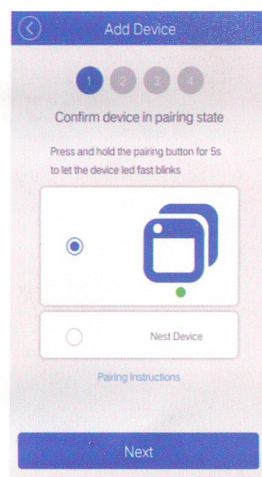


No devices currently, tap on below button to add

Tap "+" on Smart Home APP



Select the first part



IOS user can try the second option(AP), manual configuration.