

## Wall Mounted Touch Panel

Model No.: T21, T22, T24, T25

4 Zone/1-5 color/Glass touch panel/Color slide/Wireless remote 30m distance/AAA x 2 battery



T21  
4 Zone dimming

T22  
4 Zone CCT

T24  
4 Zone RGB/RGBW

T25  
4 Zone RGB+CCT

### Features

- Touch panel 4 zone 1-5 color RF remote.
- Each zone can remote control multiple Skydance's 2.4G LED controllers.
- Ultra sensitive high strength glass touch panel with touch color slide in the middle.
- Smooth and accurate color adjustment by touching the color slide.
- Touch keys with chord tones and LED indicator.
- Free installation, no wiring, removable.
- AAA x 2 battery powered.
- White & Black glass panel available.

CE RoHS  LVD RED

### Technical Parameters

Input and Output	
Output signal	RF(2.4GHz)
Working voltage	3VDC(AAA x 2)
Working current	< 5mA
Standby current	< 20µA
Standby time	1 year
Remote distance	30m

Environment	
Operation temperature	Ta: -30°C ~ +55°C
Case temperature (Max.)	Tc: +65°C
IP rating	IP20

Safety and EMC	
EMC standard (EMC)	EN301 489, EN 62479
Safety standard(LVD)	EN60950
Radio Equipment(REDE)	EN300 328
Certification	CE, EMC, LVD, RED

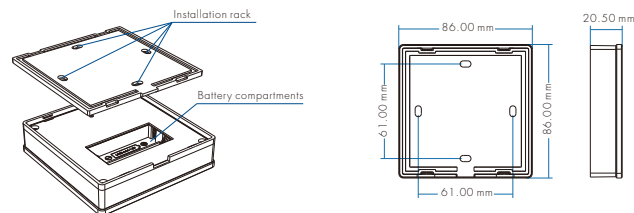
  

Warranty	
Warranty	5 years

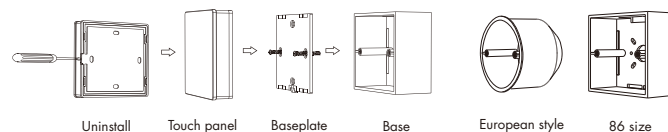
Weight	
Net weight	0.156kg
Gross weight	0.192kg

### Mechanical Structures and Installations



Installation diagram:

Typical base as below:



To fix the panel, two options are offered for selection:

- Option 1: fix it on the wall with two screws.
- Option 2: adhere it to the wall with paster.

### Match Remote Control (two match ways)

End user can choose the suitable match/delete ways. Two options are offered for selection:

#### Use the controller's Match key

Match:  
Short press match key, immediately press zone key of the touch panel.  
The LED indicator fast flash a few times means match is successful.

Delete:  
Press and hold match key for 5s to delete all match.  
The LED indicator fast flash a few times means all matched remotes were deleted.

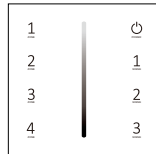
#### Use Power Restart

Match:  
Switch off the power of the receiver, then switch on power again, immediately short press zone key 3 times on the touch panel.  
The light blinks 3 times means match is successful.

Delete:  
Switch off the power of the receiver, then switch on power again, immediately short press zone key 5 times on the touch panel.  
The light blinks 5 times means all matched remotes were deleted.

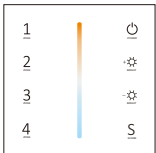
## Key function

## T21 Single color panel



- Turn on/off all zone light.
- Brightness slide.
- Short press recall scene. Long press 2s to save the current state into 1/2/3.
- Short press turn on zone light and select zone simultaneously, long press 2s turn off zone light. 4 zone control separately or synchronously, each zone could control multiple receivers.

## T22 Dual color panel



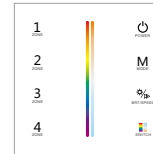
- Turn on/off all zone light.
- Color temperature.
- Brightness +, 10 levels.
- Brightness -, 10 levels.
- Short press recall scene. Long press 2s to save the current state into the scene.
- Short press turn on zone light and select zone simultaneously, long press 2s turn off zone light. 4 zone control separately or synchronously, each zone could control multiple receivers.

## T24 RGBW panel



- Turn on/off all zone light.
- Color slide.
- Short press play 10 built-in mode, long press run mode-cycle.
- Adjust dynamic mode speed or static color brightness, 10 levels.
- Short press turn on/off VV channel, long press adjust VV channel brightness.
- Short press turn on zone light and select zone simultaneously, long press 2s turn off zone light. 4 zone control separately or synchronously, each zone could control multiple receivers.

## T25 RGB+CCT panel



- Turn on/off all zone light.
- RGB color / Color temperature slide.
- Switch between RGB color / Color temperature slide.
- Short press play 10 built-in mode, long press run mode-cycle.
- Adjust dynamic mode speed or static color brightness, 10 levels.
- Short press turn on zone light and select zone simultaneously, long press 2s turn off zone light. 4 zone control separately or synchronously, each zone could control multiple receivers.

**Note:** After touch power key to turn off light, long press power key for 5 seconds will turn on or turn off tone.

## Safety information

1. Read all instructions carefully before you begin this installation.
2. When installing battery, pay attention to the battery positive and negative polarity. A long time without the remote control, remove the battery. When remote distance becomes smaller and insensitive, replace the battery.
3. If no response from the receiver, please re-match the remote.
4. Gently handle remote, beware of falling.
5. For indoor and dry location use only.