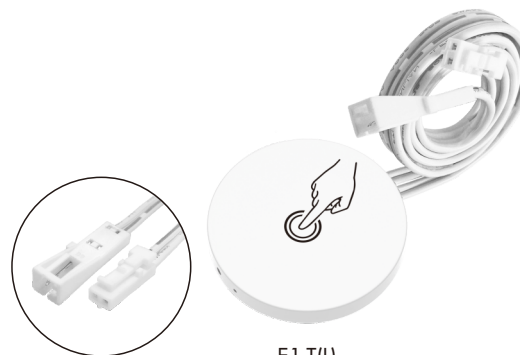


E1-T(D),E1-T(L)

Paste Anywhere Touch Sensor Switch



E1-T(D)
DC female input
DC male output



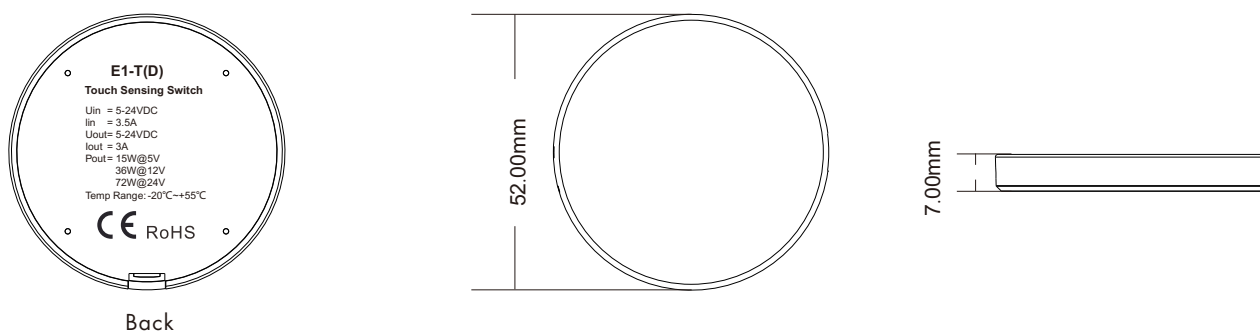
E1-T(L)
Dupont male jack in
Dupont female jack out

CE RoHS

Feature

- Paste anywhere touch sensor switch, 5-24VDC power supply, output connected to low voltage LED strip.
- Can detect touch movement through non-metallic materials such as wood, acrylic, plastic and glass.
- Short press to turn on/off the light, long press to adjust the brightness.
- 1s light on fade, 2s light off fade.
- Logarithmic dimming curve.
- 2 levels of touch sensing distance can be set (0-1 cm for open installation, 3-4cm for concealed installation).
- 3 levels of output PWM frequency can be set (500Hz/2KHz(default)/4KHz).
- Ultra-thin design, no need to cut hole, random paste installation, can be hidden.
- Apply to light illumination of cabinets, closets, wine cabinets and so on.

Dimension

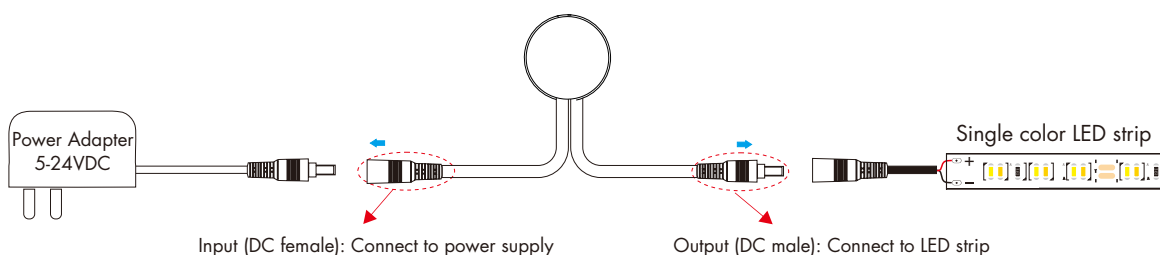


Technical Parameters

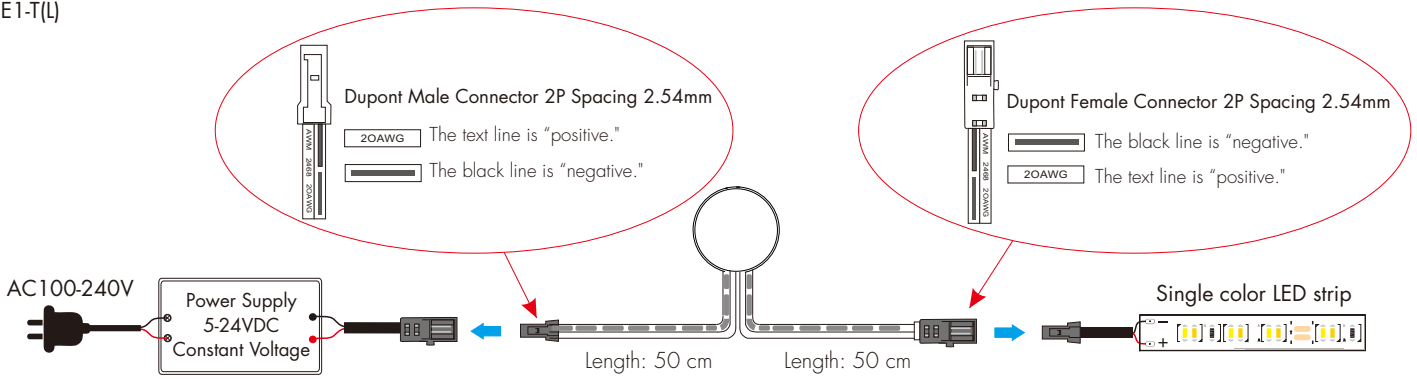
Input and Output		Environment and Protection		Safety and EMC	
Input voltage	5-24VDC	Operation temperature	Ta: -20°C ~ +55°C	Safety standard	EN 61347-1/-2 EN 62493
Output voltage	5-24VDC	Protection	Reverse polarity	EMC standard	EN IEC 55015/EN IEC 61547
Output current	3A	Package		Certification	CE RoHS
Output power	15-72W	Size	90x130mm	Warranty	5 years
PWM Frequency	500Hz/2KHz(default)/4KHz	Gross weight	0.036kg		

Wiring Diagram

- E1-T(D)



• E1-T(L)



Sensor Switch Function

Touch switch:

Short press to turn the light on or off.
 Long press for 1-6s, adjust the brightness of the light (adjustment range: 5-100%),
 Long press again, the brightness changes in reverse.
 When the light is on, the indicator is brighter; when the light is off, the indicator is dimmer;
 the indicator keeps blinking during brightness adjustment.

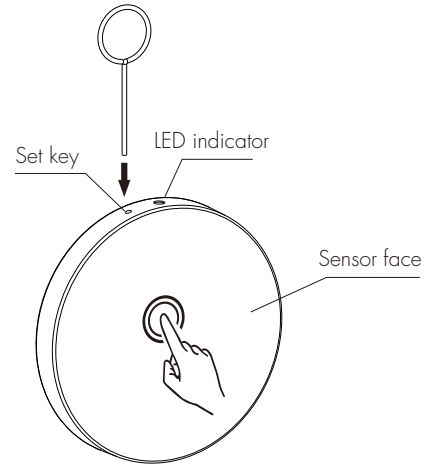
The factory default sensing distance is 3-4cm and PWM frequency is 2KHz.
 Please set the sensing distance and PWM frequency according to the actual installation requirements
 by short press or long press the set key with the equipped pin.

Set the sensor distance:

Short press the set key to switch 2 levels of sensing distance in sequence.
 When the sensor distance is set to 0-1cm (for open mounting), the LED indicator blinks 1 time;
 When the sensor distance is set to 3-4cm (for concealed mounting), the LED indicator blinks 2 times;
 Note: When the sensor switch is powered up, the LED indicator will blink
 the corresponding number of times according to the current sensor distance setting value.

Set the PWM frequency:

Long press the setup button for 5-15 s to set 3 kinds of PWM frequency in sequence.
 Long press for 5s, the PWM frequency is set to 500Hz and the LED indicator blinks 1 time;
 Long press for 10s, the PWM frequency is set to 2KHz and the LED indicator blinks 2 times;
 Long press for 15s, the PWM frequency is set to 4KHz and the LED indicator blinks 3 times.
 Note: When long press, the LED indicator is off and will blink the corresponding number of times at 5s, 10s, 15s moments.

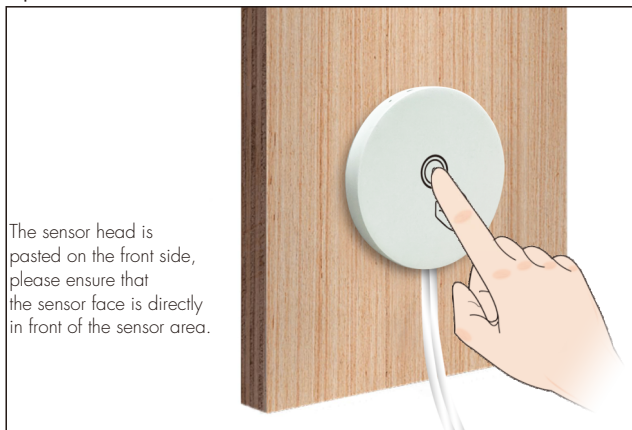


Memory function:

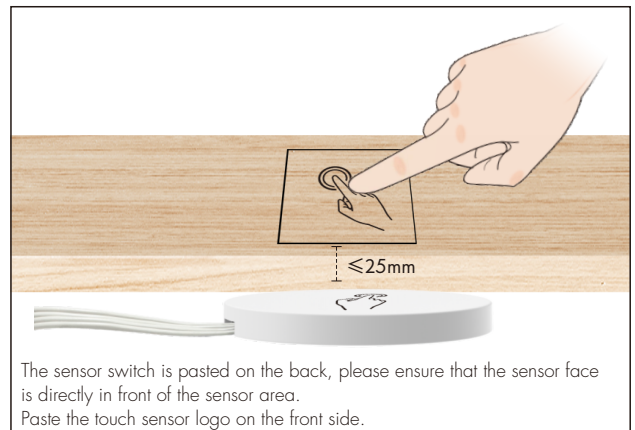
After power failure and turn on again, the device automatically restores the setting parameters before power failure.

Sensor Switch Installation

Open installation:



Concealed installation:



Installation Precautions:

1. Please use 3M adhesive to install the sensor switch anywhere or on the back of non-metallic materials such as wood, plastic, glass, acrylic, etc.
2. The sensor switch is not affected by ambient temperature, humidity, light, etc., and has strong anti-interference capability.
3. When installing, place the sensing side up.
4. Concealed detection thickness ≤ 25mm.

Sensor Switch Application



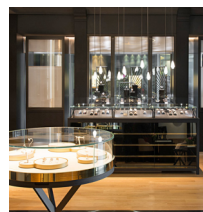
Wine cabinet application



Closet application



Cabinet application



Showcase application